

Cayman

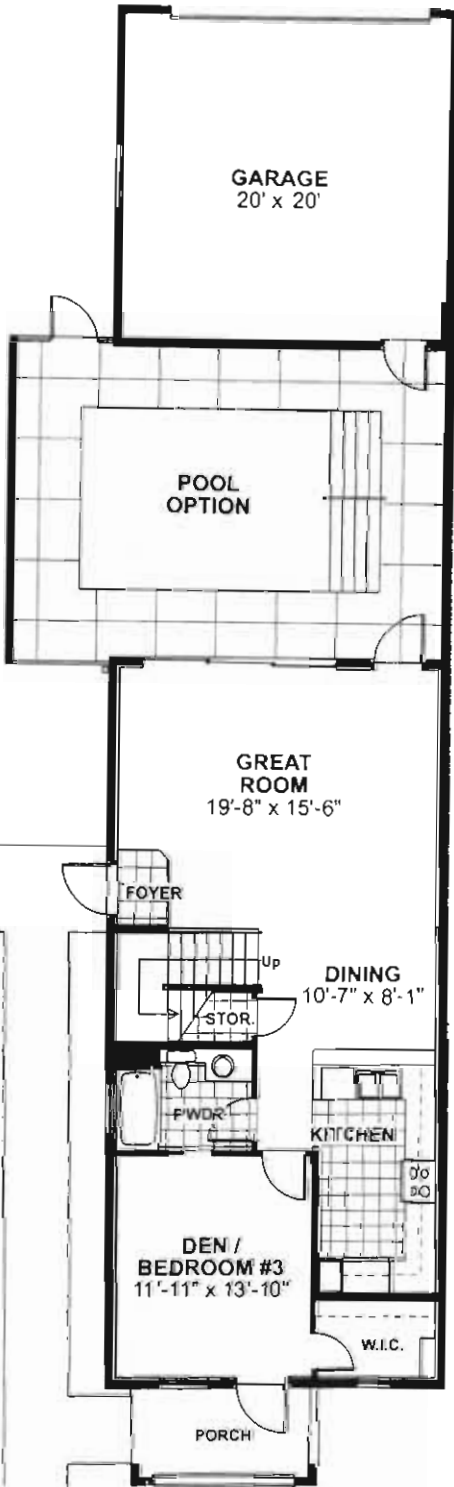
San Remo at Palmira

Luxury Townhome, 3 Bedrooms, 3 Baths, with 2-Car Garage

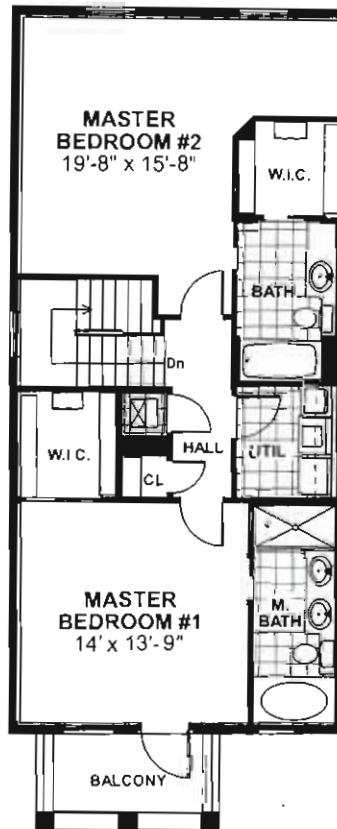
Residence Area	1,867 sq. ft.
2-Car Garage	436 sq. ft.
Patio	524 sq. ft.
Porch	68 sq. ft.
Balcony	68 sq. ft.
Total	2,963 sq. ft.

* Square footage calculations include the exterior dimensions of the building and may consider the garage wall as shared.

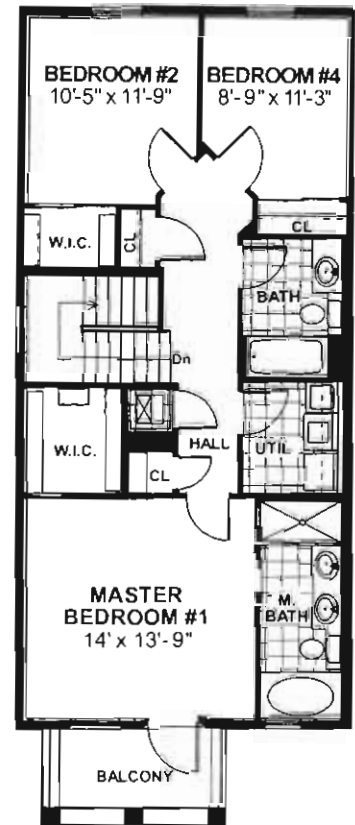
Preliminary floor plan. All dimensions are approximate to finish of walls. The Developer reserves the right to change and/or alter materials, specifications, features, dimensions, designs, options, colors, finishes, landscaping and prices without notice. No pool, deck, jacuzzi, patio furniture or equipment is provided.



First Floor
Elevation B



Second Floor
Elevation B



Optional Second Floor Plan
Bedroom #4
Elevation B