



**THE CARRINGTON**  
**MASTERCRAFT HOMES, INC.**

Approximately 2,218 square feet living area

**FOUR BEDROOMS**

Greet your guests as they arrive through the raised entry and formal foyer. They'll be truly impressed. You've always wanted to have a very formal living room, with lots of glass and a beautiful view. The family will look forward to gathering in the family room to watch the latest movie release. There is room for everyone, and a great corner for a wrap-around home-theater.

**TWO AND ONE-HALF BATHS**

**TWO STORY DESIGN**

**DOUBLE CAR GARAGE**

**ELEGANT HIGH ENTRY**

**EAT-IN KITCHEN**

**MASTER SOAKING TUB**

**FULL GE APPLIANCE PACKAGE**

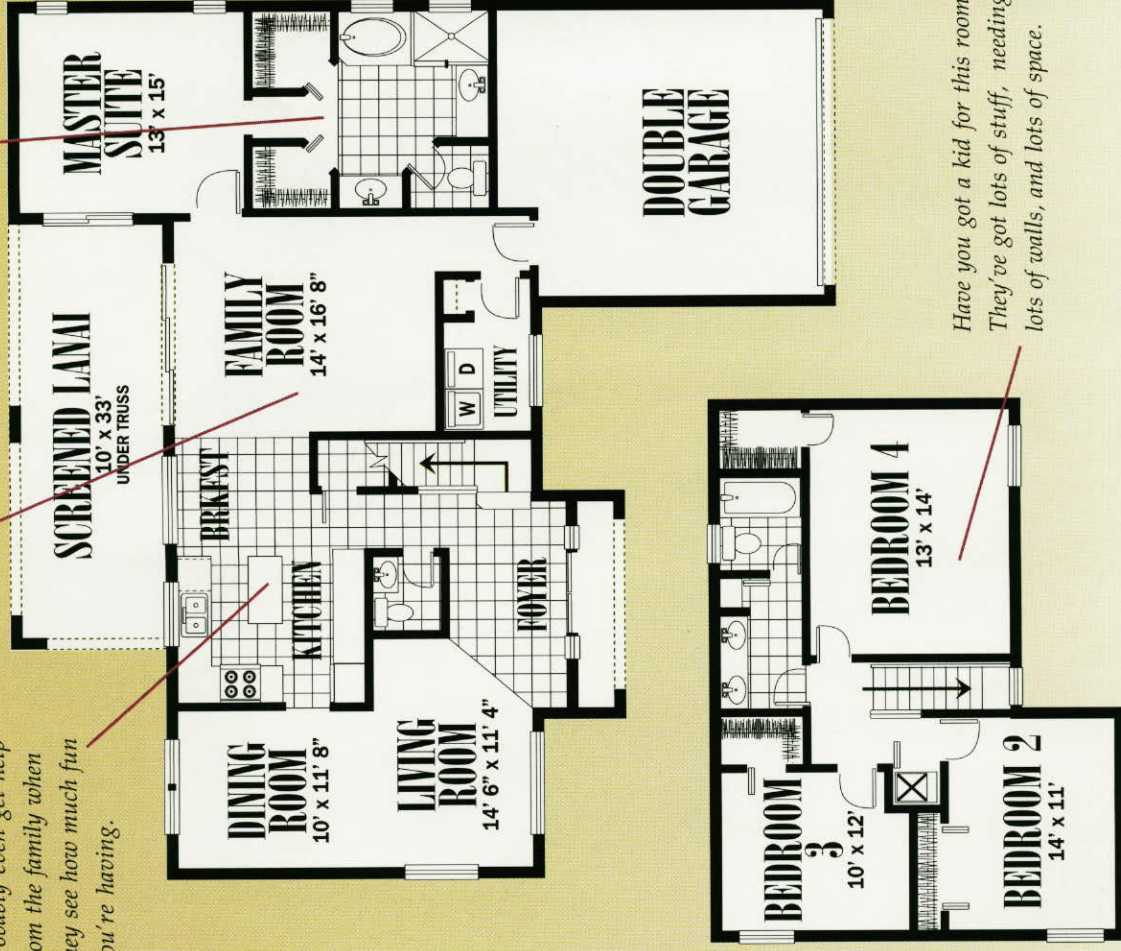
**RAISED WOOD PANEL KITCHEN CABINETRY**

*This is where you'll spend the most enjoyable hours. Comparing your stories of the day, and enjoying your family as the children grow much faster than you ever expected.*

*It's almost a joy to prepare meals on this island within a quick reach of everything you'll need. You'll probably even get help from the family when they see how much fun you're having.*

*Real Walk-in not just peak-in closets. And, look at the space. It's like staying at a fine resort.*

*Have you got a kid for this room? They've got lots of stuff, needing lots of walls, and lots of space.*



**IT'S THE PLACE THAT YOU'VE BEEN DREAMING OF!**

