

The St. Thomas 3 Bedrooms/Study, 2 1/2 Baths



Distinctive Interiors

- 12' ceiling in dining room, living room and study
- 11' ceiling in kitchen and leisure room
- Colonial-style door casing and base board
- 6-panel, colonist-style interior doors
- Bronze or white-finished 8' high aluminum sliding glass doors
- Schlage door hardware
- Marble window sills
- Textured wall finish throughout
- Kitchen and bathroom walls finished smooth
- Pre-wired telephone jacks, cable television outlets
- Pre-wired ceiling fan outlets
- Name brand, stain resistant wall-to-wall carpeting in choice of colors
- Grey tinted, single-hung windows with white or bronze finish
- Spacious utility room with laundry tub, washer/dryer hook-ups and outside vent
- Plant shelves
- Lighted door bell
- Cast iron tub in guest bath with cultured marble countertop
- Single lite French doors in living room
- 8' x 13' air-conditioned attic storage space with oversized pull-down stair
- Cornerless sliding door installation in leisure room
- Serving pantry with built-in desk

Luxurious Master Suite

- Spacious walk-in closet
- Cultured marble countertops with mirror
- Double sink
- Moen faucetry and water closets
- Large linen closet
- Clear glass shower enclosure
- Window seat
- Single lite French doors
- Tray ceiling

Inviting Kitchen

- Quality cabinetry with raised panel doors
- G.E. kitchen appliance package including:
 - Side-by-side refrigerator/freezer with ice maker
 - Spacemaker microwave oven
 - Five cycle dishwasher
 - Self cleaning oven with range
 - Garbage disposal
- Double stainless steel sink with single-lever faucet
- Elevated dishwasher installation

Energy Saving Features

- R-30 ceiling insulation in living areas
- R-19 insulation in exterior 2" x 6" frame walls
- R-11 insulation in exterior 2" x 4" walls
- R-4 insulation on exterior block walls
- High efficiency Bryant air-conditioning and heating system
- 52 gallon quick recovery hot water heater

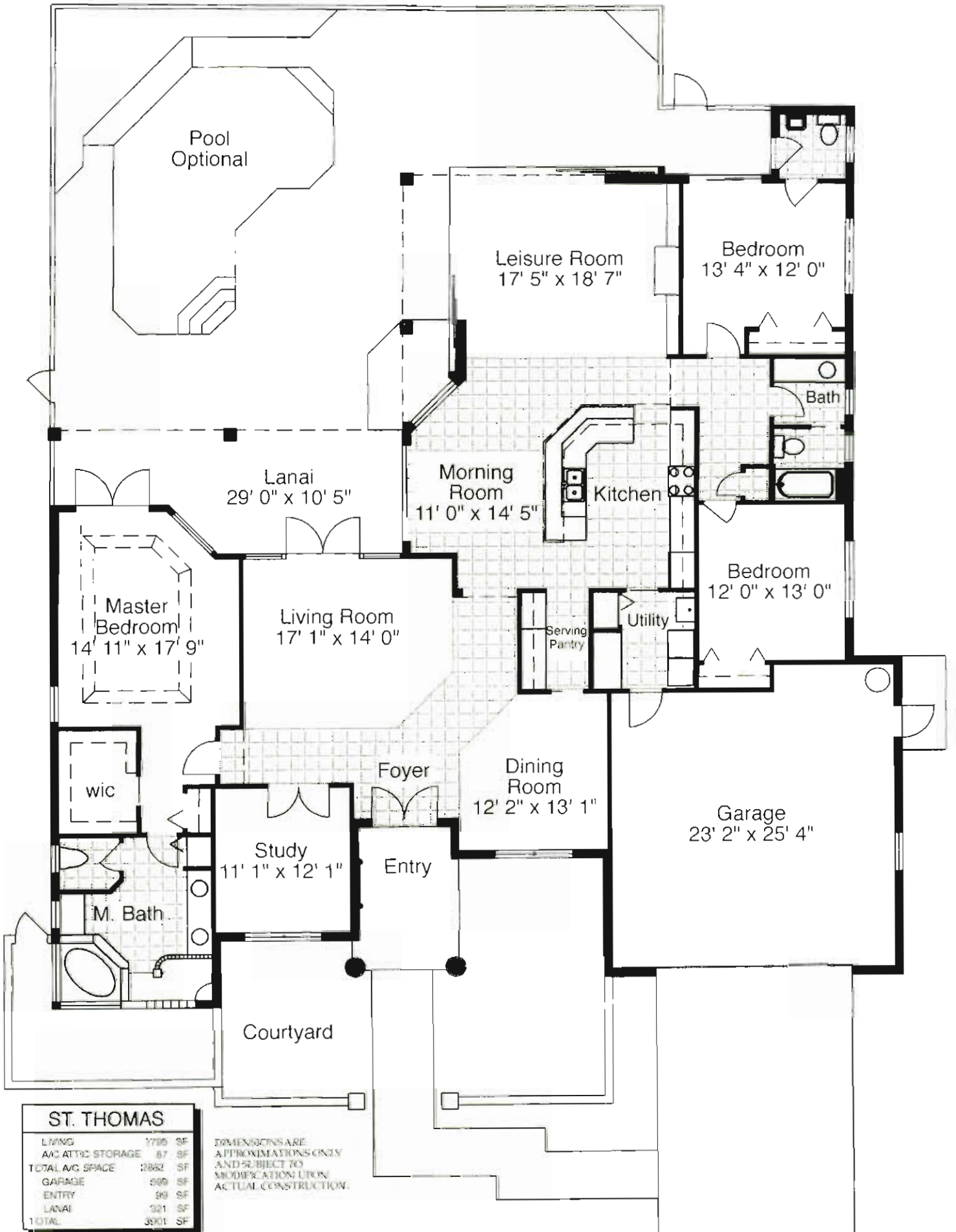
Exterior Features

- Covered front entry
- Palladian windows in study, dining room
- Exterior entry pool bath
- Master bath privacy wall
- Entry courtyard
- CBS construction
- Stucco exterior
- Lifetile concrete tile roof
- Screen-enclosed lanai with Kool-deck
- Fully landscaped and Floratam sodded
- Automatic sprinkler system, rainfall sensor
- Brushed concrete driveway and walks
- Oversized two-car garage with 16' x 7' raised-panel steel door, automatic opener and 2 transmitters
- 4 hose bibs

General Information

- Termite treatment and soil tests
- Engineered roof trusses
- Interior studs at 16" O.C.
- Copper plumbing with PVC drain
- Paint – 2 interior/exterior coats
- 200 AMP electrical service





ST. THOMAS	
LIVING	1795 SF
A/C ATTIC STORAGE	87 SF
TOTAL AV. SPACE	2882 SF
GARAGE	599 SF
ENTRY	39 SF
LANAI	321 SF
TOTAL	3901 SF

DIMENSIONS ARE APPROXIMATIONS ONLY AND SUBJECT TO MODIFICATION UPON ACTUAL CONSTRUCTION.