

The Highlander 3 Bedrooms/Study, 3 1/2 Baths



General Information

- Termite treatment
- Soil tests
- Lot survey, spot survey and final survey
- Engineered roof trusses
- Interior studs at 16" O.C.
- Copper plumbing with PVC drain
- Paint – 2 interior/exterior coats
- Attic access stairs in garage
- 200 AMP electrical service

Distinctive Interiors

- 14' ceiling in living room and leisure room
- 13' ceiling in entry and study
- 12' ceiling in dining room
- 11' ceiling in kitchen
- Minimum 10' ceiling throughout
- Colonial-style door casing and base board
- 6-panel, 8' colonist-style interior doors
- Bronze or white finished 8' high aluminum sliding glass doors
- Ceramic tile in foyer, pass-to-morning room, kitchen, utility room and bathroom floors
- Schlage door hardware
- Marble window sills
- Textured wall finish throughout
- Kitchen and bathroom walls finished smooth
- Pre-wired telephone jacks, cable television outlets
- Pre-wired ceiling fan outlets

- Name brand, stain resistant wall-to-wall carpeting in choice of colors
- Grey tinted, single-hung windows with white or bronze finish
- Spacious utility room with laundry tub, washer/dryer hook-ups and outside vent
- Plant shelves
- Decorator lighting fixtures
- Lighted door bell
- Cast iron tub in guest bath with cultured marble countertop

Luxurious Master Suite

- 2 spacious walk-in closets
- Cultured marble countertops
- Double sink
- Moen faucetry and water closets
- His and Her vanities with separate dressing table and full mirror above
- Large linen closet
- Clear glass shower enclosure

Inviting Kitchen

- Quality cabinetry with raised panel doors
- G.E. kitchen appliance package including:
 - Side-by-side refrigerator/freezer with ice maker
 - Spacemaker microwave oven
 - Five cycle dishwasher
 - Self cleaning oven with range
 - Garbage disposal
- Double stainless steel sink with single lever faucet

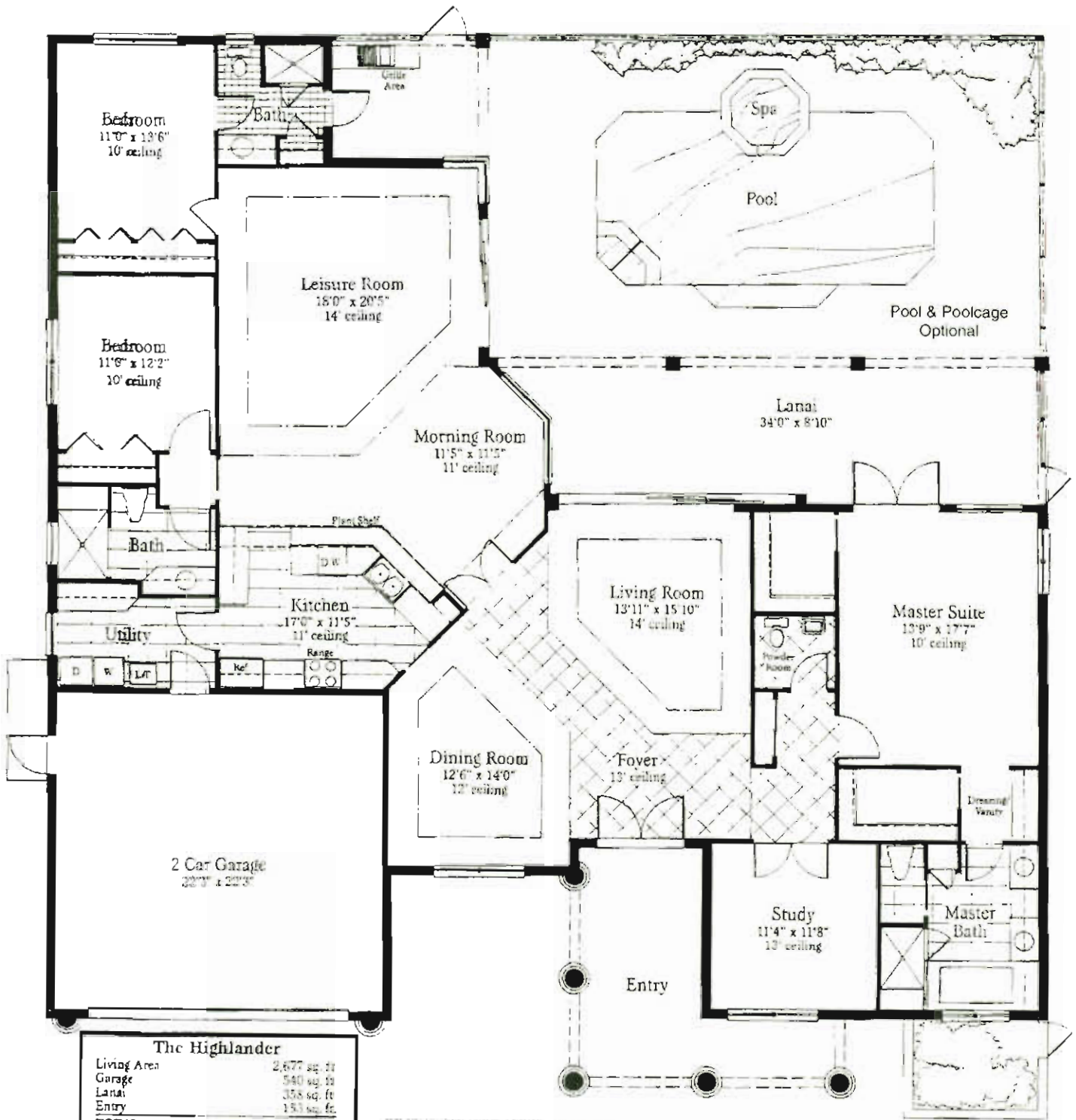
Energy Saving Features

- R-30 ceiling insulation in living areas
- R-19 insulation in exterior 2" x 6" frame walls
- R-11 insulation in exterior 2" x 4" walls
- R-4 insulation on exterior block walls
- High efficiency Bryant air-conditioning and heating system
- 52 gallon quick recovery hot water heater

Exterior Features

- Covered front entry
- Palladian windows at study and dining room
- CBS construction
- Stucco exterior
- Lifetile concrete tile roof
- Screen-enclosed lanai with Kool-deck
- Fully landscaped and Floratam sodded yard
- Automatic sprinkler system with rainfall sensor
- Brushed concrete driveway and walks
- Oversized two-car garage with 16' x 8' raised-panel steel door, automatic opener and 2 transmitters
- 4 hose bibs





The Highlander	
Living Area	2,677 sq. ft.
Garage	940 sq. ft.
Lanai	358 sq. ft.
Entry	153 sq. ft.
TOTAL	3,728 sq. ft.

DIMENSIONS ARE APPROXIMATIONS ONLY AND SUBJECT TO MODIFICATION UPON ACTUAL CONSTRUCTION.