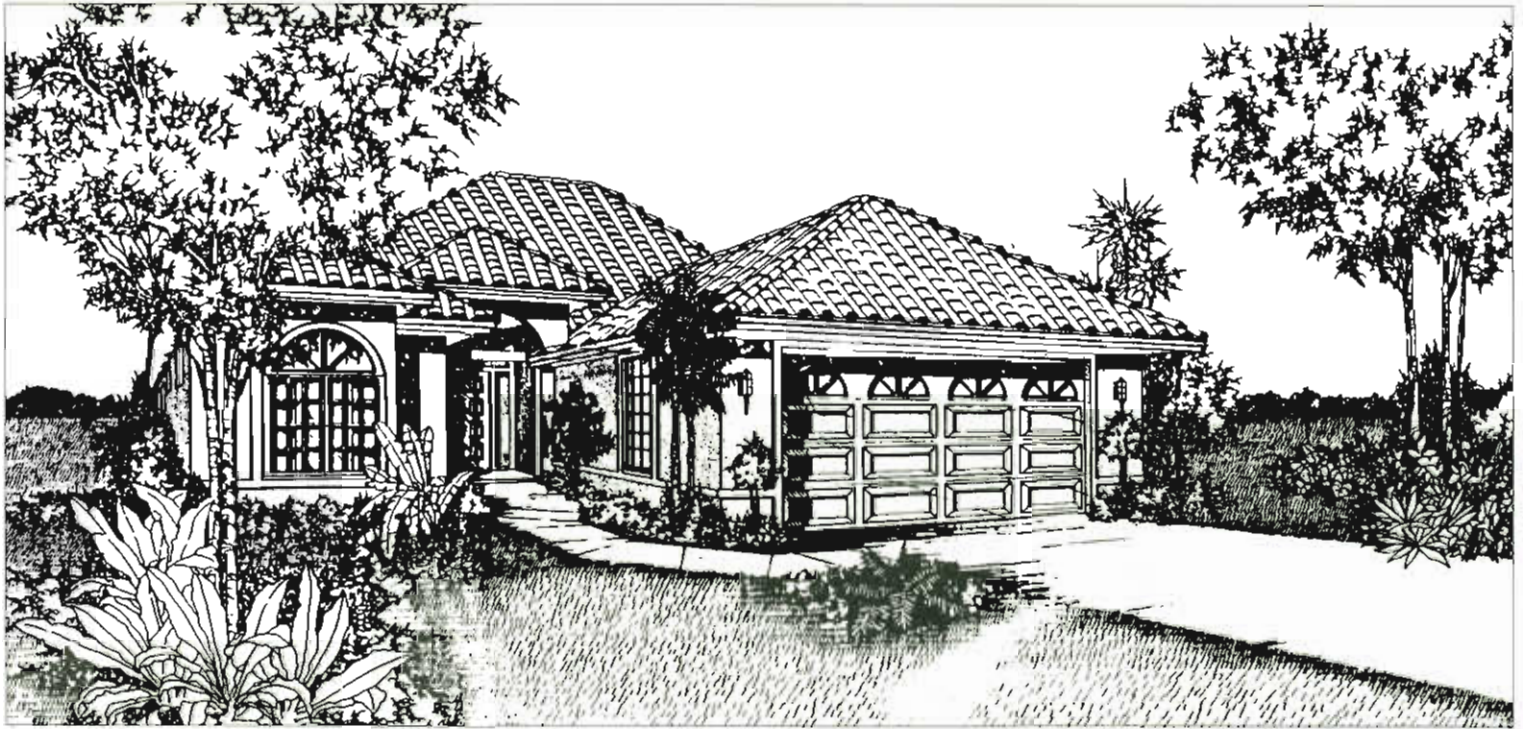


The Barbados 3 Bedrooms, 2 Baths



Distinctive Interiors

- Tile entry foyer floor in choice of colors
- 12' ceiling in entry foyer and living room; volume ceilings throughout
- Solid wood colonial-style door casing and base board
- 6 panel colonist-style interior doors
- Schlage door hardware
- Textured wall finish throughout
- Kitchen and bathroom walls finished smooth
- Pre-wired telephone jacks, cable television outlets
- Pre-wired ceiling fan outlets
- Name brand, stain resistant wall-to-wall carpeting in choice of colors
- Grey tinted, single hung windows with white or bronze finish
- 8' high sliding glass doors
- Spacious utility room adjacent to garage and kitchen with utility sink
- Plant shelves

Luxurious Master Bath

- Acrylic soaking tub set in ceramic tile deck
- Moen faucetry and water closets
- Ceramic tile floor and walk-in shower
- Large linen closet

- Full mirror above vanities
- Cultured marble countertops
- Clear glass shower enclosure

Inviting Kitchen

- Quality cabinetry with white raised panel doors
- G.E. kitchen appliance package including:
 - Side-by-side refrigerator/freezer with ice maker
 - Spacemaker microwave oven
 - Five cycle dishwasher
 - Self cleaning oven with range
 - Garbage disposal
- Double stainless steel sink with single lever faucet
- Armstrong Cambrey no wax vinyl floor covering
- Spacious pantry

Energy Saving Features

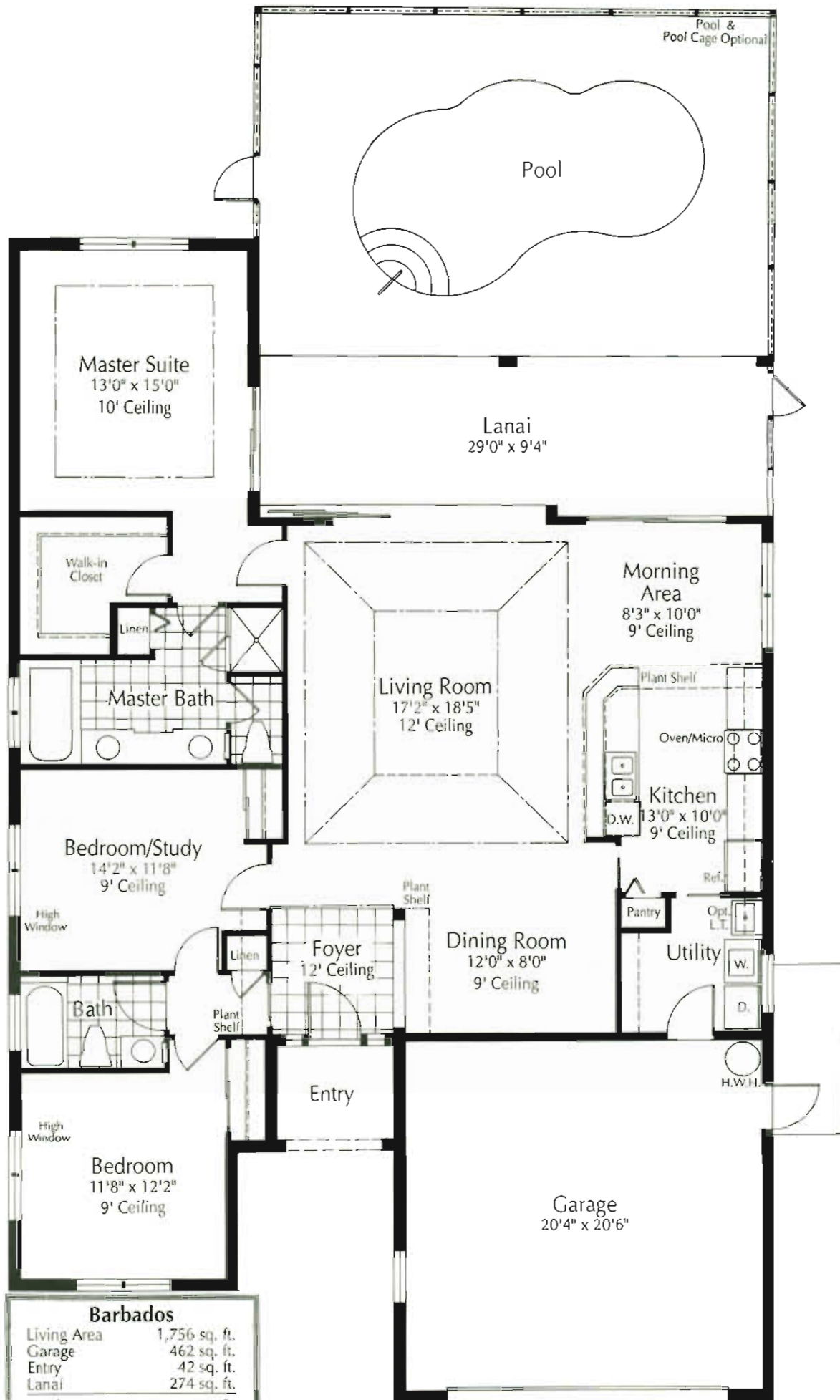
- R-30 ceiling insulation in living areas
- R-19 insulation in exterior 2" x 6" frame walls
- R-11 insulation in exterior 2" x 4" frame walls
- R-4.2 insulation on exterior block walls
- High efficiency Bryant air

- conditioning and heating system
- 40 gallon quick recovery hot water heater

Exterior Features

- Covered front entry
- Choice of Palladian or Square top front windows
- Concrete block construction
- Stucco Exterior
- Lifetile concrete roof tile
- Maintenance-free aluminum fascia and soffits
- Screen-enclosed lanai
- Fully landscaped and Floratam sodded yard
- Automatic sprinkler system with rainfall sensor
- Brushed concrete driveway
- Raised panel steel garage door with automatic opener and 2 transmitters





DIMENSIONS ARE APPROXIMATIONS ONLY AND SUBJECT TO MODIFICATION UPON ACTUAL CONSTRUCTION