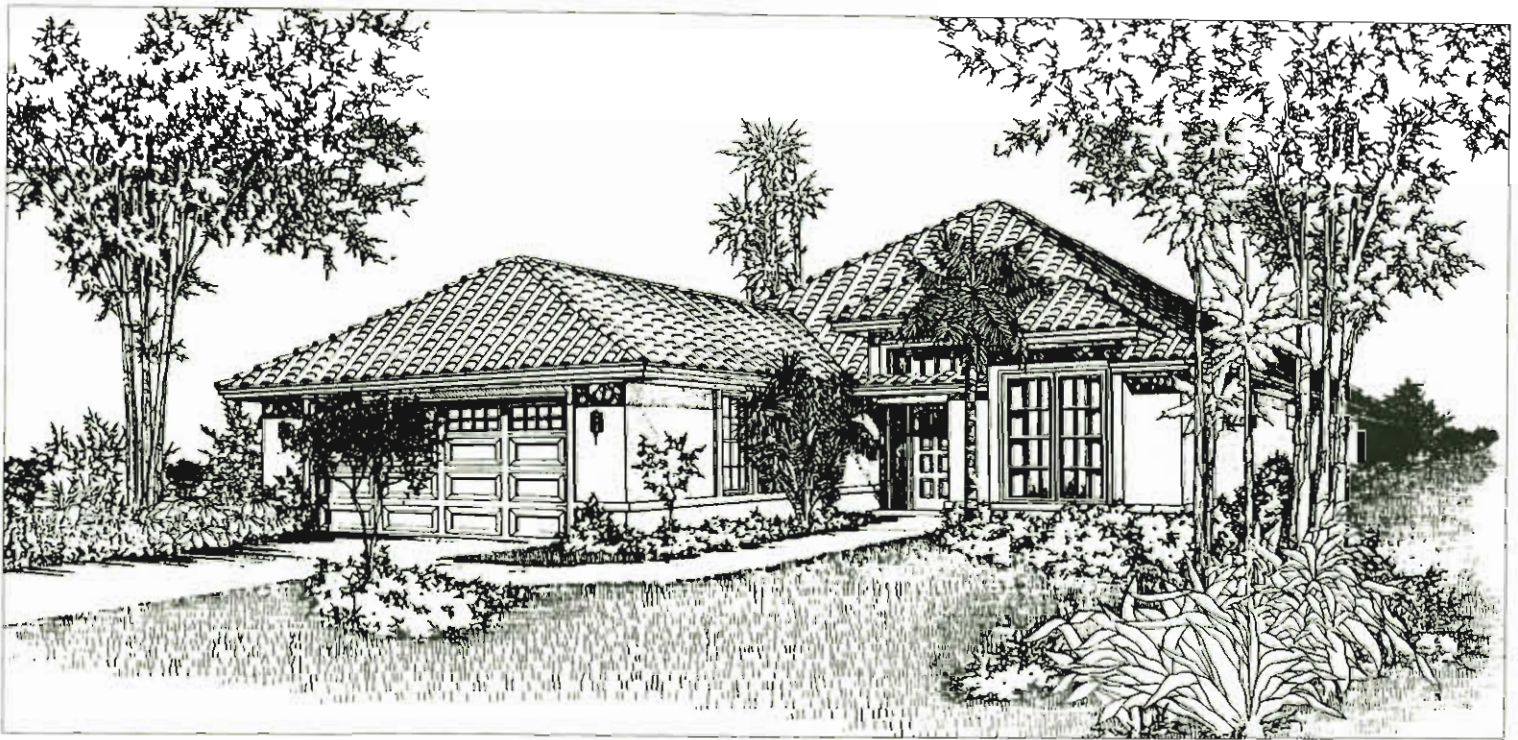


**The Aruba** 3 Bedrooms, 2 Baths



**Distinctive Interiors**

- Tile entry foyer floor in choice of colors
- 12' ceiling in entry foyer and living room; volume ceilings throughout
- Solid wood colonial-style door casing and base board
- 6 panel colonist-style interior doors
- Schlage door hardware
- Textured wall finish throughout
- Kitchen and bathroom walls finished smooth
- Pre-wired telephone jacks, cable television outlets
- Pre-wired ceiling fan outlets
- Name brand, stain resistant wall-to-wall carpeting in choice of colors
- Grey tinted, single hung windows with white or bronze finish
- 8' high sliding glass doors
- Spacious utility room adjacent to garage and kitchen with utility sink

**Luxurious Master Bath**

- Acrylic soaking tub set in ceramic tile deck
- Moen faucetry and water closets
- Separate His and Her vanities
- Ceramic tile floor and walk-in shower

- Large linen closet
- Full mirror above vanities
- Cultured marble countertops
- Clear glass shower enclosure

**Inviting Kitchen**

- Quality cabinetry with white raised panel doors
- G.E. kitchen appliance package including:
  - Side-by-side refrigerator/freezer with ice maker
  - Spacemaker microwave oven
  - Five cycle dishwasher
  - Self cleaning oven with range
  - Garbage disposal
- Double stainless steel sink with single lever faucet
- Armstrong Cambray no wax vinyl floor covering
- Spacious pantry
- Plant shelf

**Energy Saving Features**

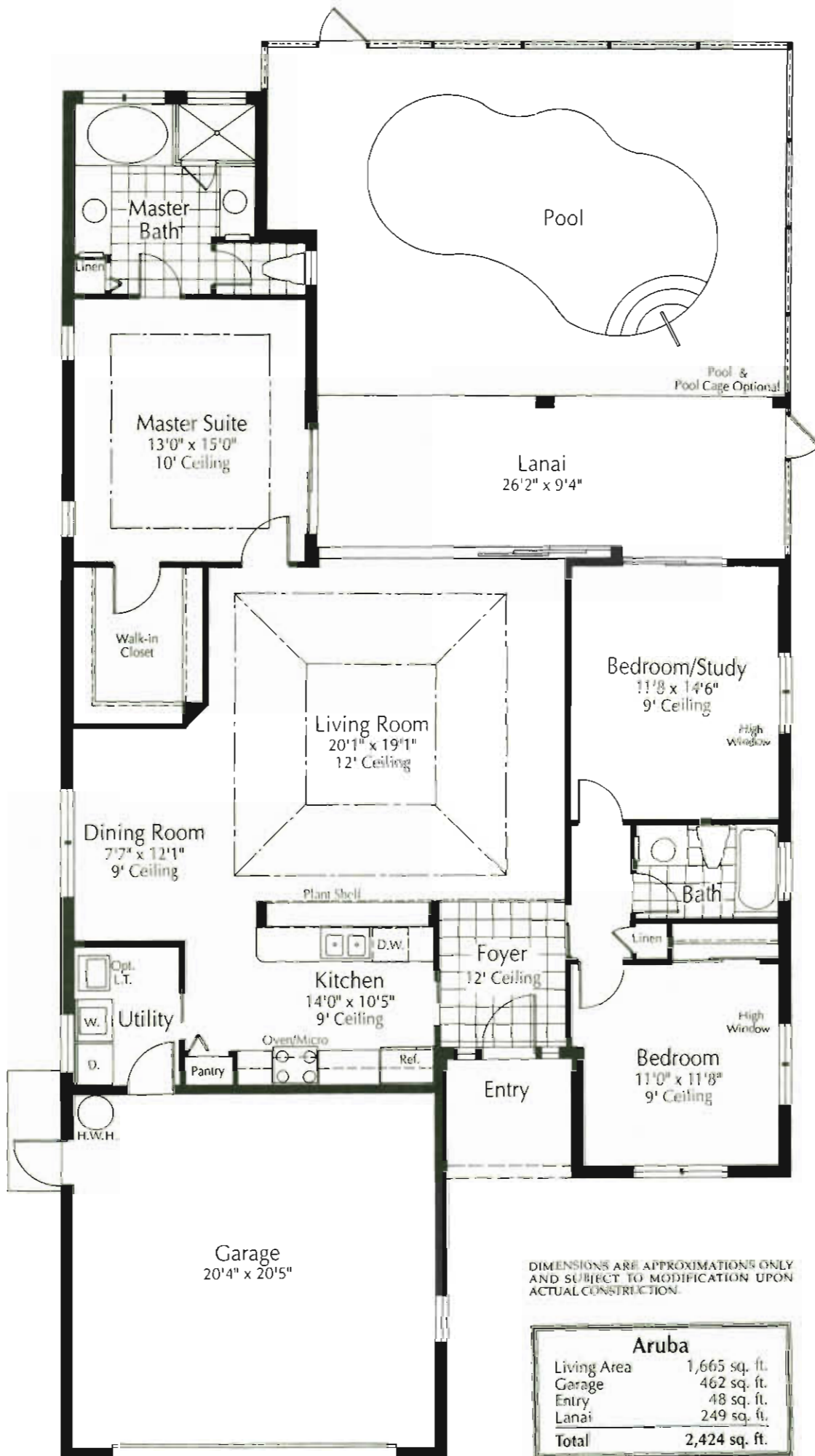
- R-30 ceiling insulation in living areas
- R-19 insulation in exterior 2" x 6" frame walls
- R-11 insulation in exterior 2" x 4" frame walls

- R-4.2 insulation on exterior block walls
- High efficiency Bryant air conditioning and heating system
- 40 gallon quick recovery hot water heater

**Exterior Features**

- Covered front entry
- Choice of Palladian or Square top front windows
- Concrete block construction
- Stucco Exterior
- Lifetile concrete roof tile
- Maintenance-free aluminum fascia and soffits
- Screen-enclosed lanai
- Fully landscaped and Floratam sodded yard
- Automatic sprinkler system with rainfall sensor
- Brushed concrete driveway
- Raised panel steel garage door with automatic opener and 2 transmitters





DIMENSIONS ARE APPROXIMATIONS ONLY AND SUBJECT TO MODIFICATION UPON ACTUAL CONSTRUCTION.

Aruba	
Living Area	1,665 sq. ft.
Garage	462 sq. ft.
Entry	48 sq. ft.
Lanai	249 sq. ft.
<b>Total</b>	<b>2,424 sq. ft.</b>