

Wilmington IV



Elevation A



Elevation B



Elevation C
Round Column

**COLONIAL HOMES**
A COLONIAL COMPANY



Oral Representations cannot be relied upon as correctly stating representations of the developer. For correct representations reference should be made to this brochure and to the documents furnished by the developer. All plans are artist renderings and all dimensions are approximate, and may vary with actual construction. Floor plans, window sizes and room sizes may vary based on the elevation selected. Landscaping on the rendering is shown only for display. Colonial Homes reserves the right to modify all plans and specifications without notice or obligation.

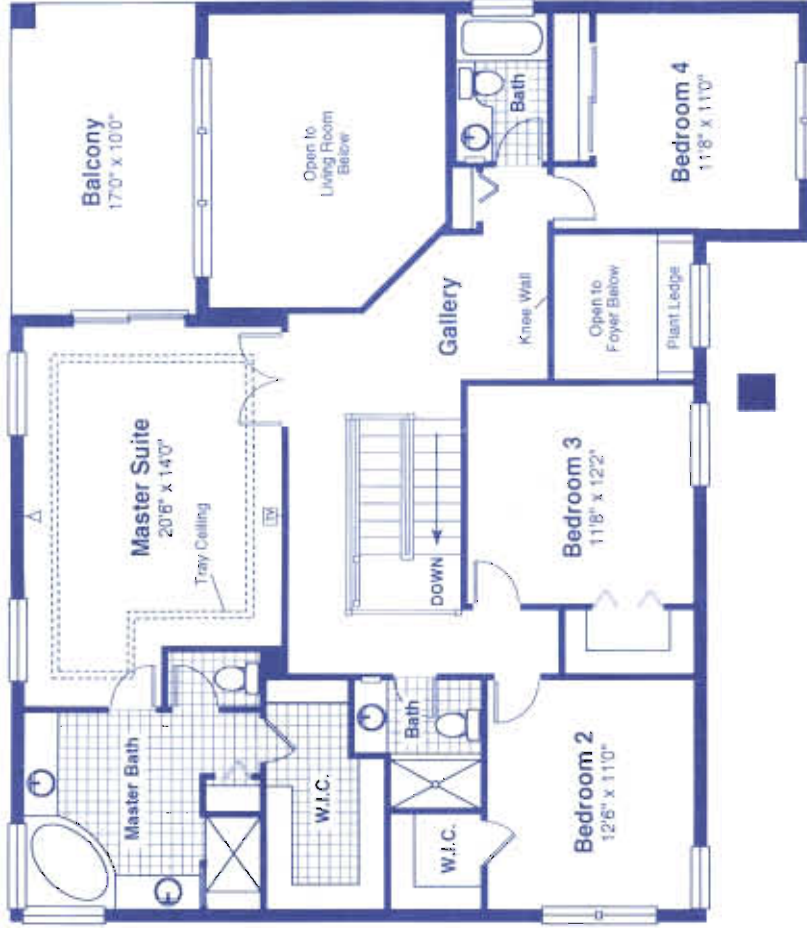


Wilmington IV

1st Floor



2nd Floor



Width	50'0" FT.
Depth	58'8" FT.
Living 1st	1,769 SQ. FT.
Living 2nd	1,476 SQ. FT.
Total Living	3,245 SQ. FT.
Garage	476 SQ. FT.
Lanai	170 SQ. FT.
2nd Floor Balcony	170 SQ. FT.
Entry	47 SQ. FT.
Total Area	4,108 SQ. FT.

First Floor Ceiling Height - 10'0"
Second Floor Ceiling Height - 9'4"



Oral Representations cannot be relied upon as correctly stating representation of the developer. For correct representations reference should be made to this brochure and to the documents furnished by the developer. All plans are artist renderings and all dimensions are approximate, and may vary with actual construction. Floor plans, window sizes and room sizes may vary based on the elevation selected. Landscaping on the rendering is shown only for display. Colonial Homes reserves the right to modify all plans and specifications without notice or obligation.