

# Monticello III with Den



*Elevation A*



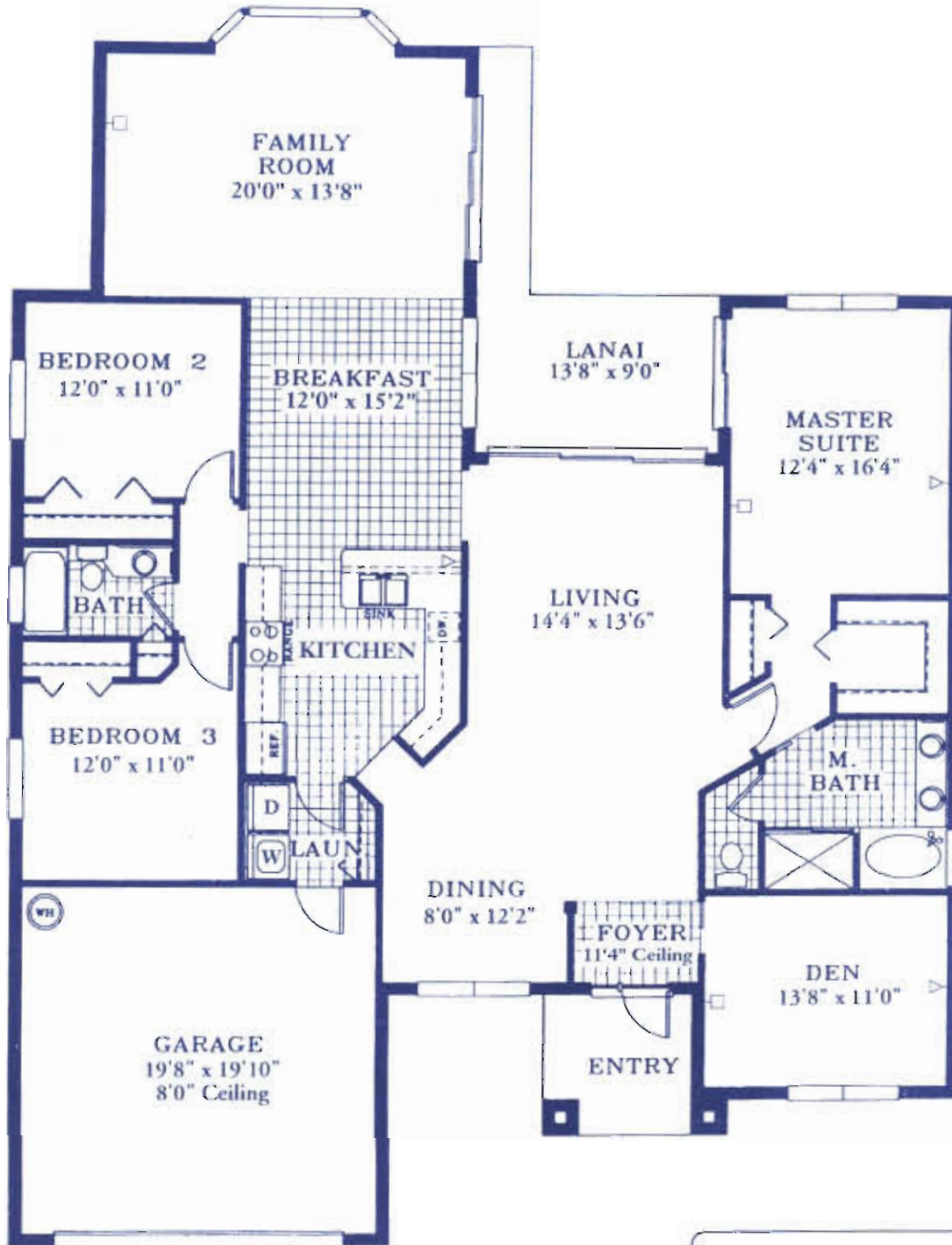
*Elevation B*



Oral Representations cannot be relied upon as correctly stating representations of the developer. For correct representations reference should be made to this brochure and to the documents furnished by the developer. All plans are artist rendering and all dimensions are approximate, and may vary with actual construction. Floor plans, window sizes and room sizes may vary based on the elevation selected. Landscaping on the rendering is shown only for display. Colonial Homes reserves the right to modify all plans and specifications without notice or obligation.



# Monticello III with Den



|                   |                      |
|-------------------|----------------------|
| Width             | 53'0" FT.            |
| Depth             | 70'0" FT.            |
| Living Area       | 2,265 SQ. FT.        |
| Garage            | 426 SQ. FT.          |
| Lanai             | 423 SQ. FT.          |
| Entry             | 71 SQ. FT.           |
| <b>Total Area</b> | <b>2,885 SQ. FT.</b> |

Ceiling Height- 9'4"



Oral Representations cannot be relied upon as correctly stating representations of the developer. For correct representations reference should be made to this brochure and to the documents furnished by the developer. All plans are artist renderings and all dimensions are approximate, and may vary with actual construction. Floor plans, window sizes and room sizes may vary based on the elevation selected. Landscaping on the rendering is shown only for display. Colonial Homes reserves the right to modify all plans and specifications without notice or obligation.