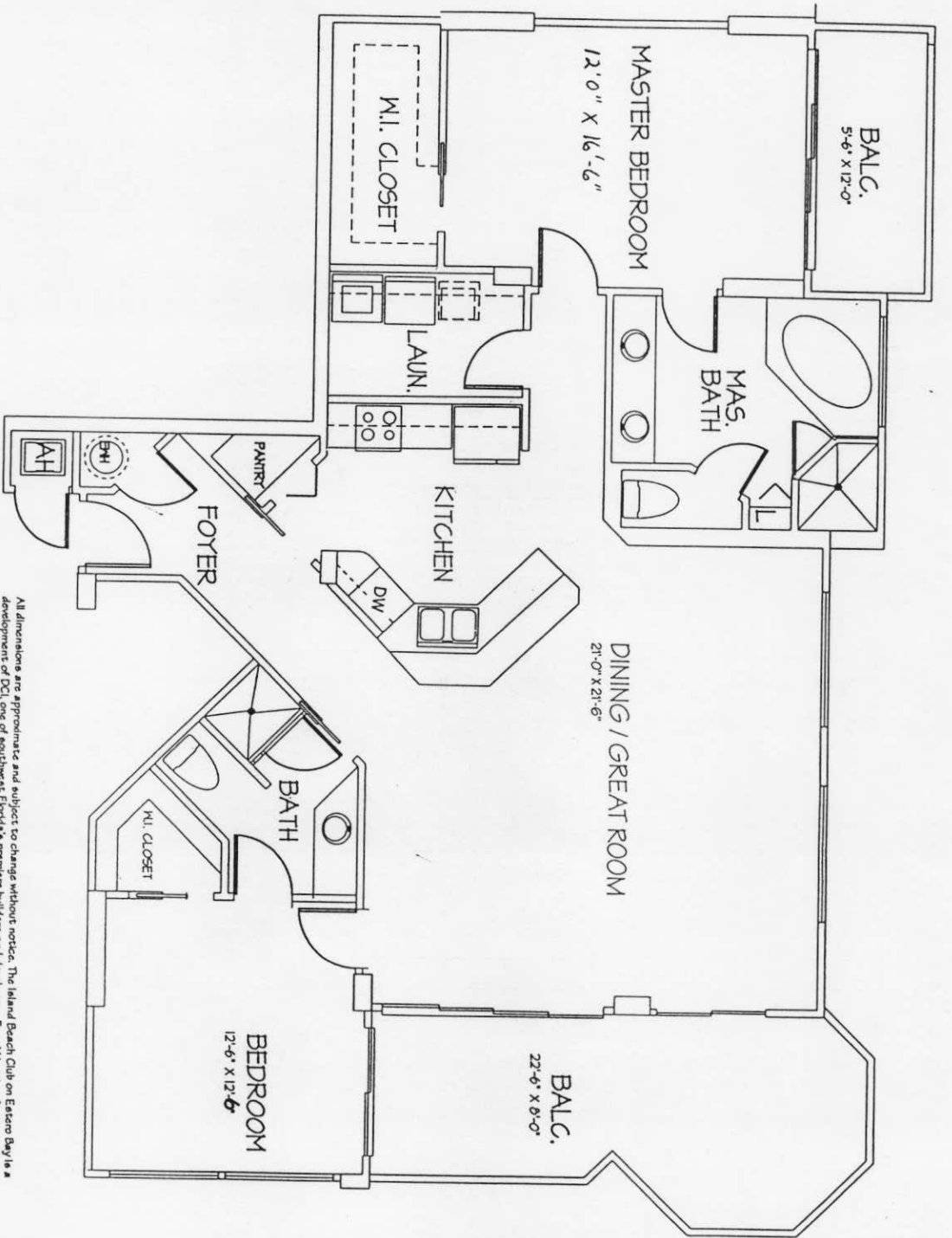


All dimensions are approximate and subject to change without notice. The Architect shall be liable for any omissions or errors in this plan. The Architect shall not be responsible for any construction or other errors or omissions on the part of the contractor or other parties.

TYPICAL FLOOR PLAN

TYPICAL FLOOR		PENTHOUSE FLOOR		GROUND FLOOR	
2 BK. AC	1400 S.F.	1 BK. AC	1400 S.F.	1 BK. AC	1400 S.F.
BALCONY	200 S.F.	BALCONY	200 S.F.	BALCONY	200 S.F.
TOTAL 2 BK. S.F.	1700 S.F.	TOTAL 1 BK. S.F.	1700 S.F.	TOTAL 1 BK. S.F.	1700 S.F.
2 RESIDENTIAL AC	1400 S.F.	1 RESIDENTIAL AC	1400 S.F.	1 RESIDENTIAL AC	1400 S.F.
TOTAL 2 RESIDENTIAL AC	2800 S.F.	TOTAL 1 RESIDENTIAL AC	1400 S.F.	TOTAL 1 RESIDENTIAL AC	1400 S.F.
TOTAL 2800 S.F.		TOTAL 1400 S.F.		TOTAL 1400 S.F.	



All dimensions are approximate and subject to change without notice. The Island Beach Club on Eastern Bay is a development of DCL, one of Southwest Florida's premiere builders and developers. Equal Housing Opportunity.

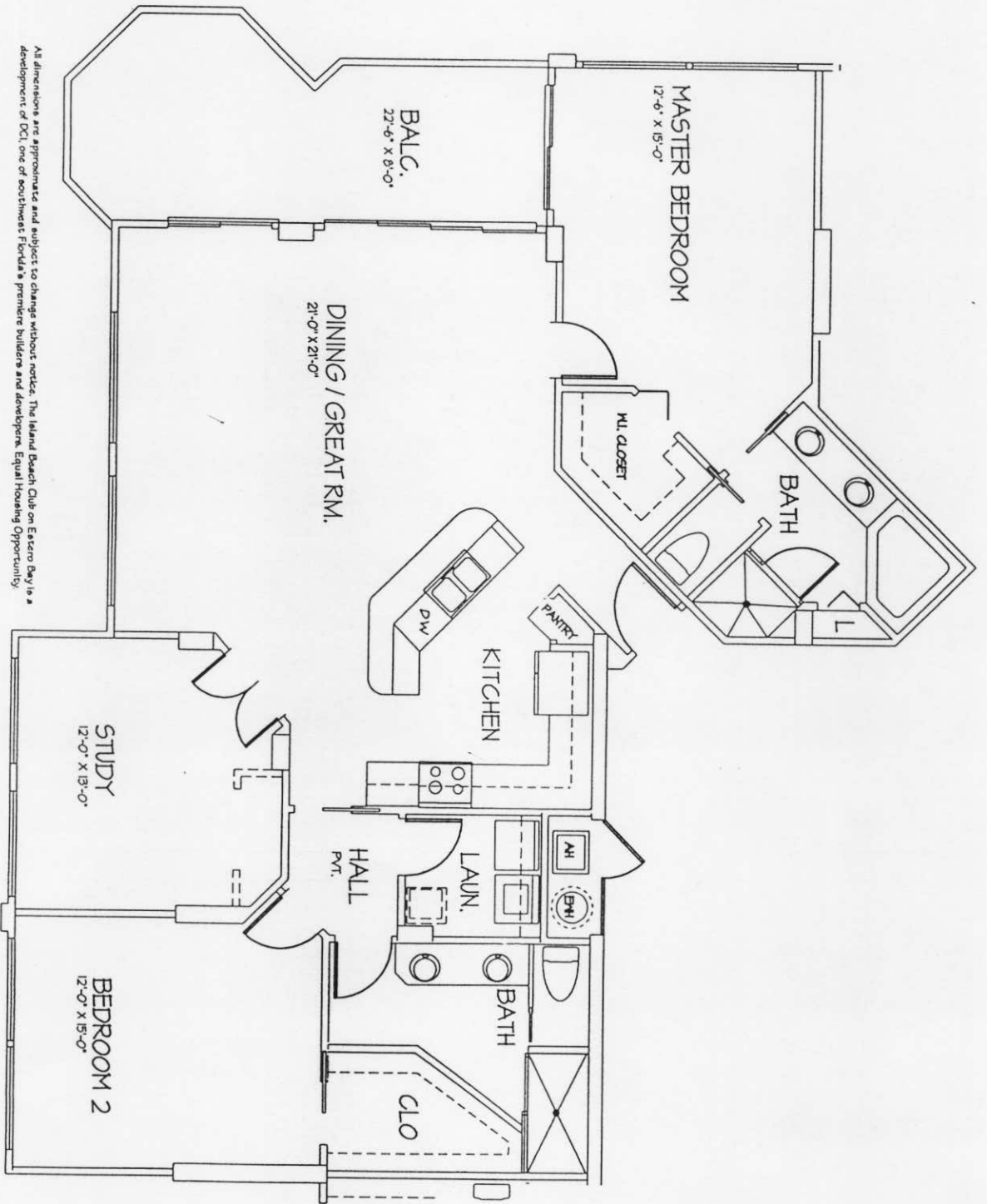
TYPICAL FLOOR PLAN

1/4" = 10"

UNIT A - 2 BR A/C 1,450 S.F.
 BALCONY 268 S.F.
 TOTAL SQUARE FOOTAGE = 1,718 S.F.

PRELIMINARY

PRELIMINARY



All dimensions are approximate and subject to change without notice. This Island Beach Club on Estero Bay is a development of DCI, one of Southeast Florida's premiere builders and developers. Equal Housing Opportunity.

TYPICAL FLOOR PLAN

1/4" = 10"

UNIT B - 2 BR / STUDY A/C
 BALCONY
 TOTAL SQUARE FOOTAGE = 1755 S.F.

1557 S.F.
 198 S.F.