

The Presidential II



Elevation A



Elevation B

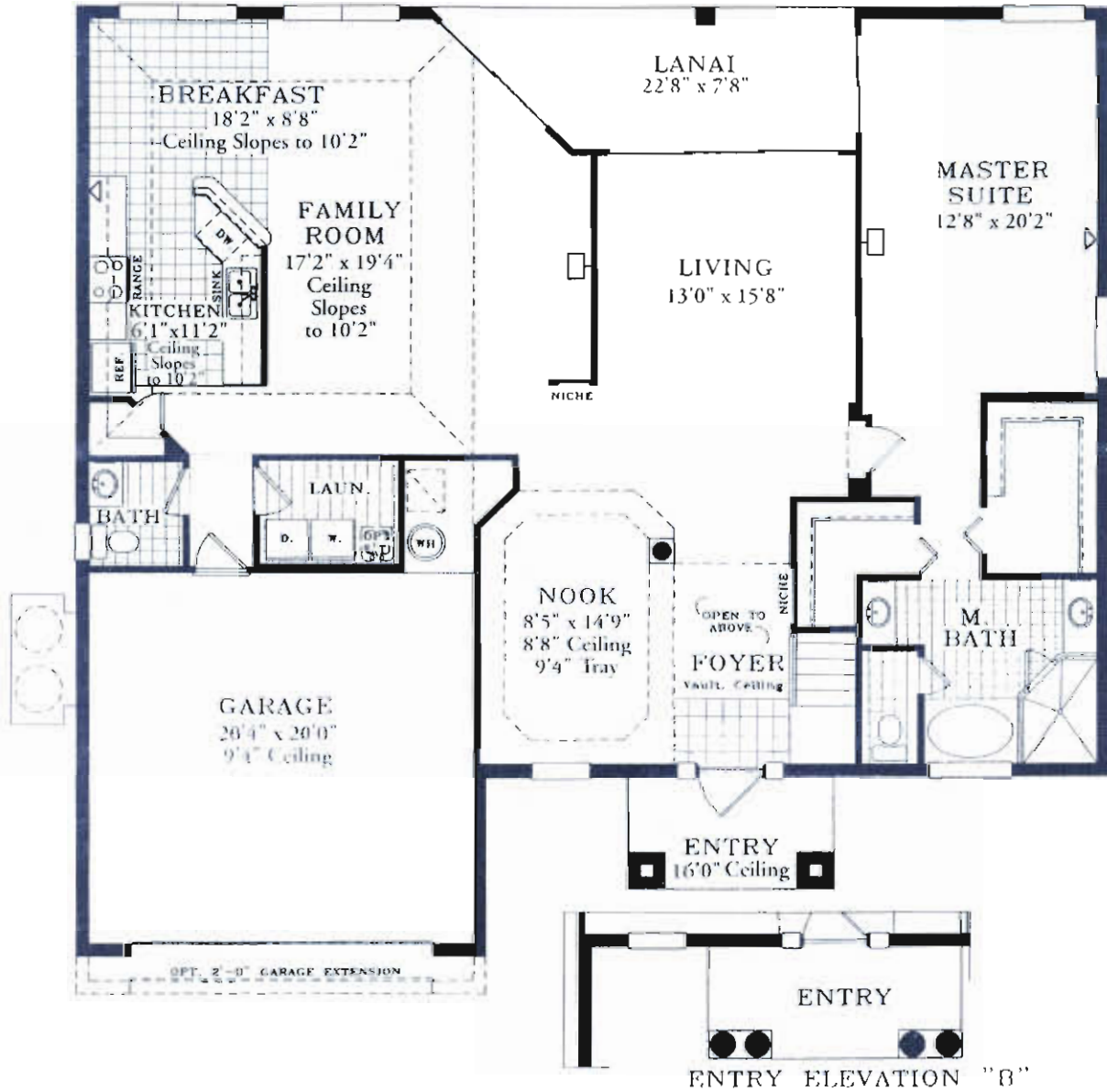


Oral representations cannot be relied upon as correctly stating representations of the developer. For correct representations reference should be made to this brochure and to the documents furnished by the developer. All plans are artist renderings and all dimensions are approximate and may vary with actual construction. Floor plans, window sizes and room sizes may vary based on the elevation selected. Landscaping on the rendering is shown only for display. Colonial Homes reserves the right to modify all plans and specifications without notice or obligation.



The Presidential II

First Floor



Width	55' 0" FT.
Depth	51' 4" FT.
Living 1st	1888 SQ. FT.
Living 2nd	1036 SQ. FT.
Total Living	2924 SQ. FT.
Garage	468 SQ. FT.
Entry	66 SQ. FT.
Covered Porch	144 SQ. FT.
Total Area	3592 SQ. FT.

1st Floor Ceiling Height 9' 4"
2nd Floor Ceiling Height 8' 0"



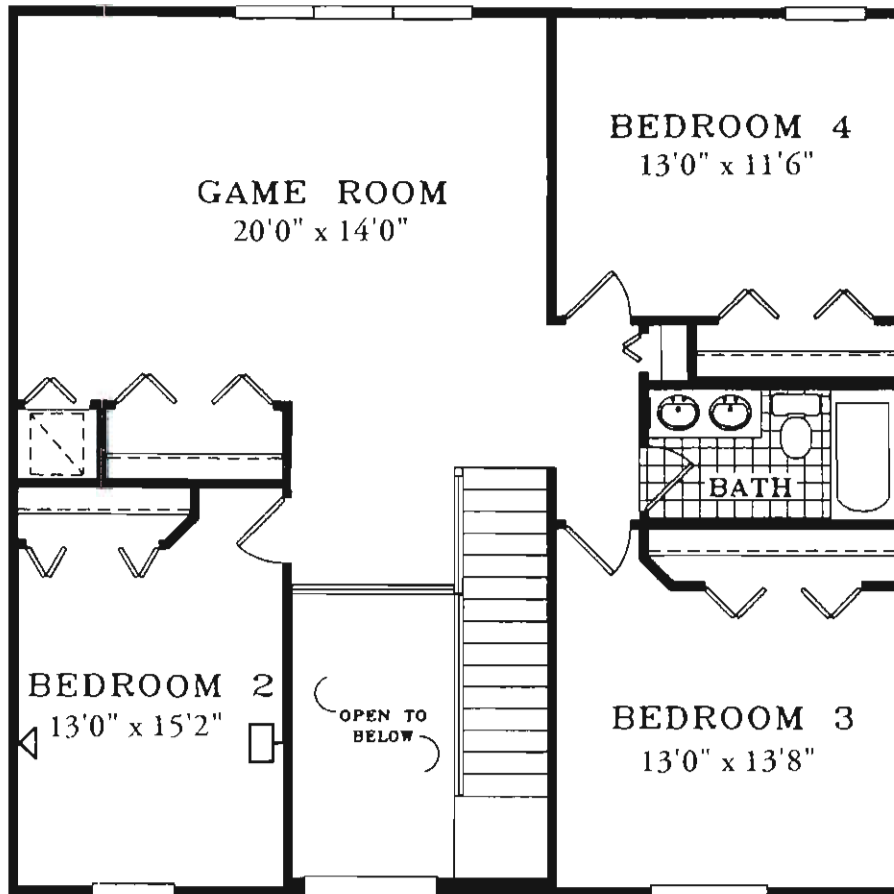
Equal representations cannot be relied upon as correctly stating representations of the developer. For correct representations reference should be made to this brochure and to the documents furnished by the developer. All plans are artist renderings and all dimensions are approximate and may vary with actual construction. Floor plans, window sizes and room sizes may vary based on the elevation selected. Landscaping on the rendering is shown only for display. Colonial Homes reserves the right to modify all plans and specifications without notice or obligation.



1st floor in back

The Presidential II

Second Floor



Oral representations cannot be relied upon as correctly stating representations of the developer. For correct representations reference should be made to this brochure and to the documents furnished by the developer. All plans are artist renderings and all dimensions are approximate and may vary with actual construction. Floor plans, window sizes and room sizes may vary based on the elevation selected. Landscaping on the rendering is shown only for display. Colonial Homes reserves the right to modify all plans and specifications without notice or obligation.

