

# Mount Vernon III



*Elevation A*



*Elevation B*

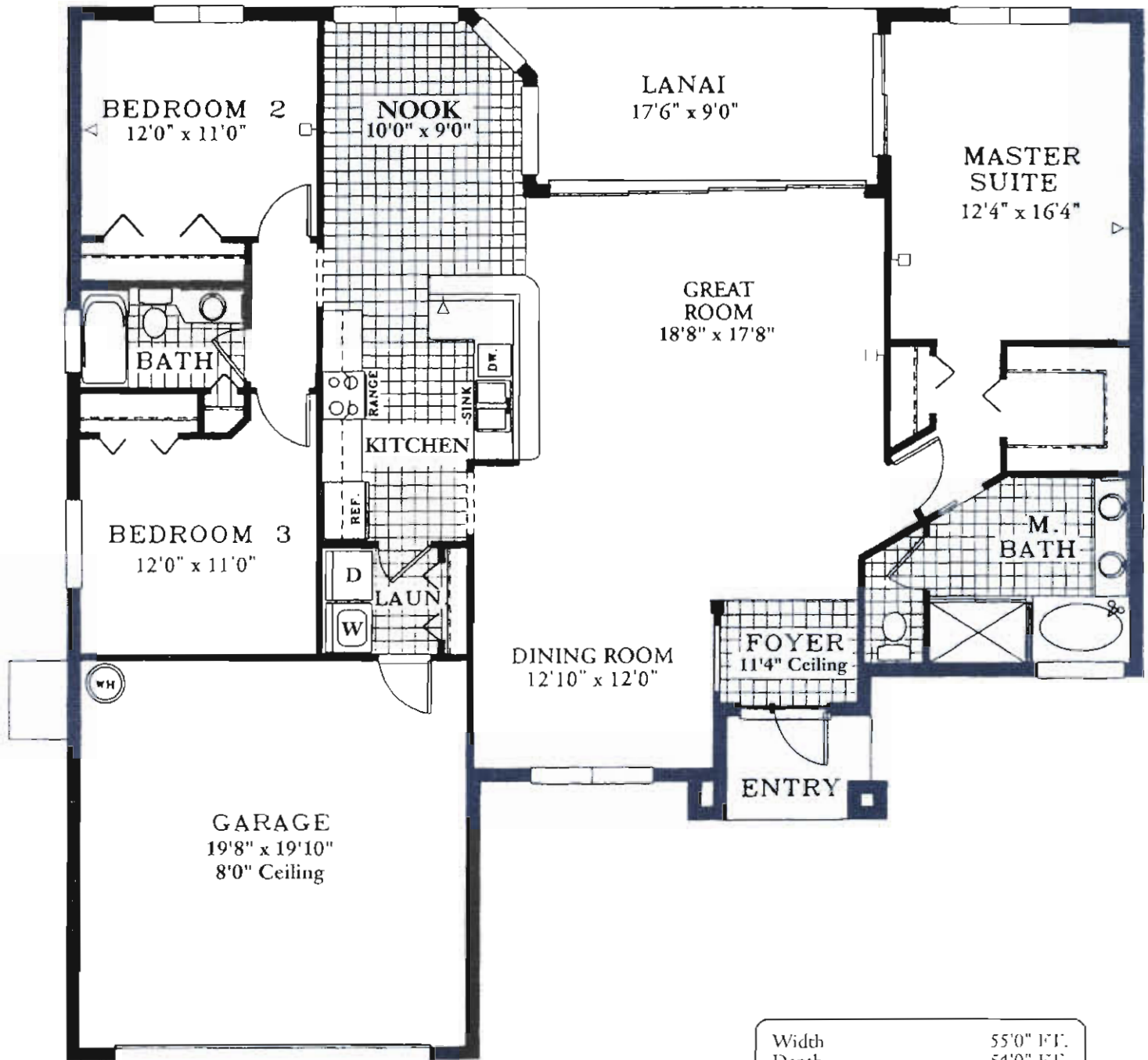
  
**COLONIAL HOMES**  
A COLONIAL  COMPANY



*Oral Representations cannot be relied upon as correctly stating representations of the developer. For correct representations reference should be made to this brochure and to the documents furnished by the developer. All plans are artist renderings and all dimensions are approximate, and may vary with actual construction. Floor plans, window sizes and room sizes may vary based on the elevation selected. Landscaping on the rendering is shown only for display. Colonial Homes reserves the right to modify all plans and specifications without notice or obligation.*



# Mt. Vernon III



Width	55'0" FT.
Depth	54'0" FT.
Living Area	1,794 SQ. FT.
Garage	426 SQ. FT.
Lanai	163 SQ. FT.
Entry	45 SQ. FT.
Total Area	2,428 SQ. FT.

Ceiling Height- 9'4"



**DIAMOND BUILDER AWARD**  
For Excellence in Consumer Satisfaction



Oral Representations cannot be relied upon as correctly stating representations of the developer. For correct representations reference should be made to this brochure and to the documents furnished by the developer. All plans are artist renderings and all dimensions are approximate, and may vary with actual construction. Floor plans, window sizes and room sizes may vary based on the elevation selected. Landscaping on the rendering is shown only for display. Colonial Homes reserves the right to modify all plans and specifications without notice or obligation.