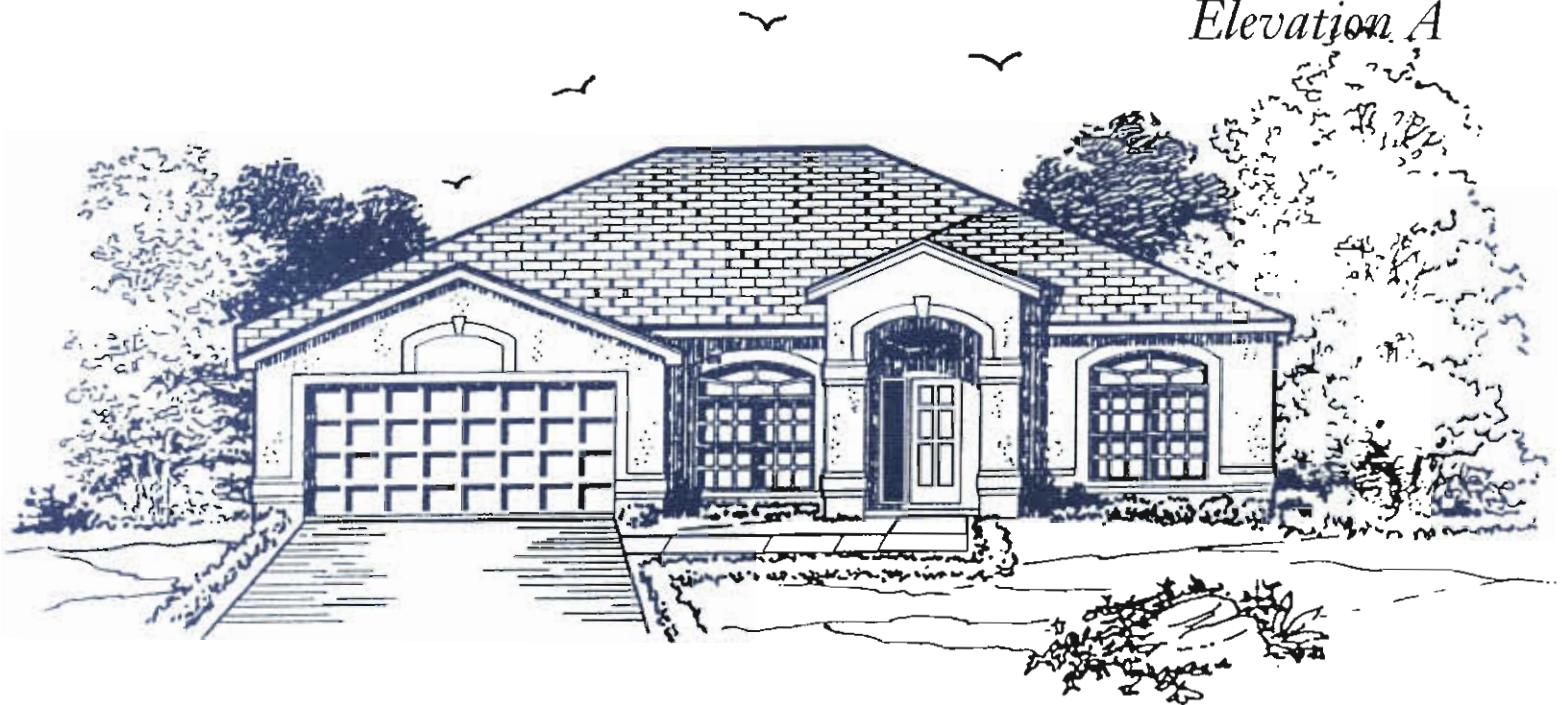


# Monticello III with Den



*Elevation A*



*Elevation B*



*Oral Representations cannot be relied upon as correctly stating representations of the developer. For correct representations reference should be made to this brochure and to the documents furnished by the developer. All plans are artist renderings and all dimensions are approximate, and may vary with actual construction. Floor plans, window sizes and room sizes may vary based on the elevation selected. Landscaping on the rendering is shown only for display. Colonial Homes reserves the right to modify all plans and specifications without notice or obligation.*



# Monticello III with Den



Width	53'0" FT.
Depth	70'0" FT.
Living Area	2,265 SQ. FT.
Garage	426 SQ. FT.
Lanai	123 SQ. FT.
Entry	71 SQ. FT.
<b>Total Area</b>	<b>2,885 SQ. FT.</b>

Ceiling Height- 9'4"



**DIAMOND BUILDER AWARD**  
For Excellence in Consumer Satisfaction



*Oral Representations cannot be relied upon as correctly stating representations of the developer. For correct representations reference should be made to this brochure and to the documents furnished by the developer. All plans are artist renderings and all dimensions are approximate, and may vary with actual construction. Floor plans, window sizes and room sizes may vary based on the elevation selected. Landscaping on the rendering is shown only for display. Colonial Homes reserves the right to modify all plans and specifications without notice or obligation.*