

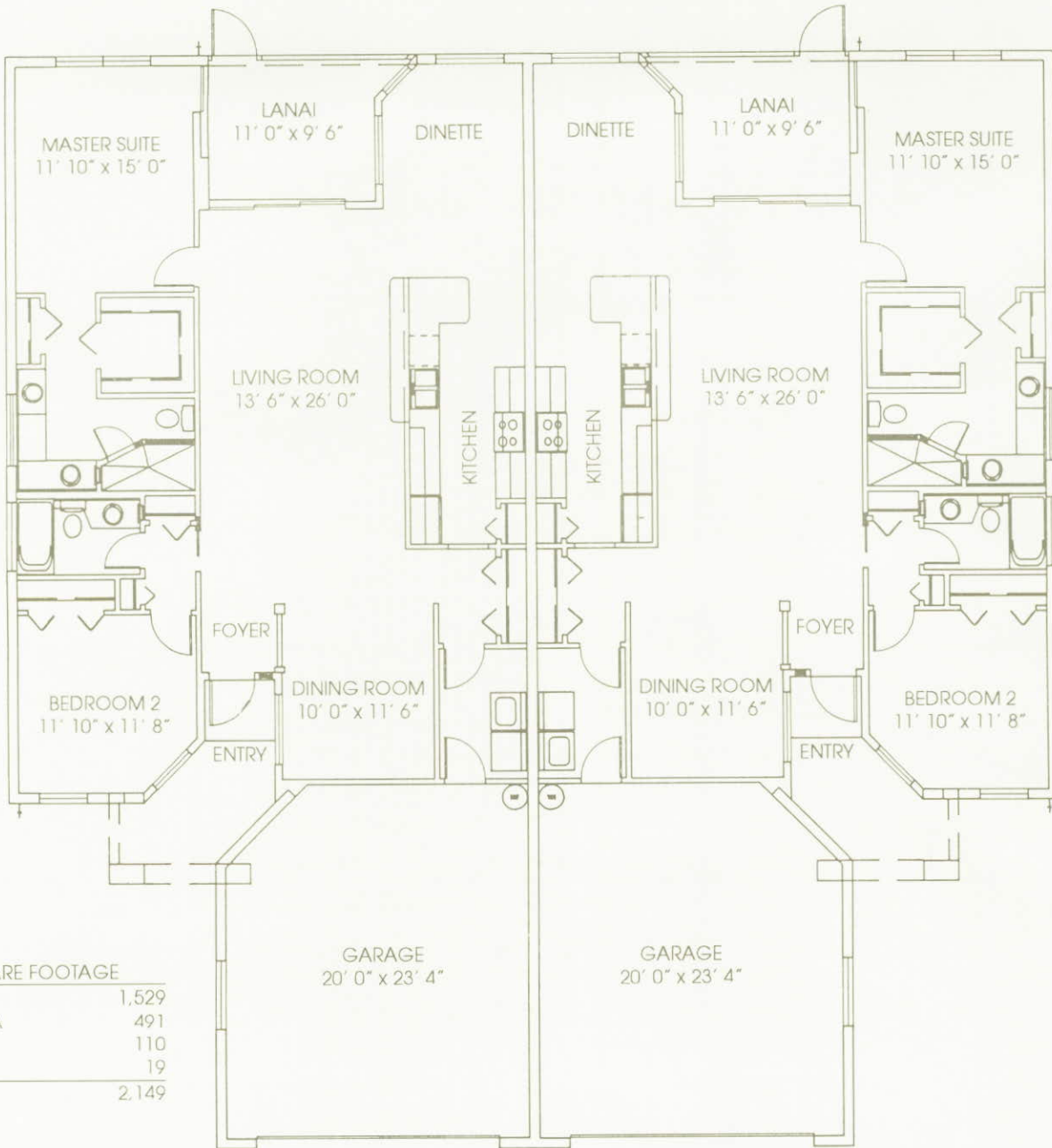
ARTIST RENDERING

 Rutenberg Homes



© US HOME 1995

LEE/COLLIER



A SQUARE FOOTAGE

LIVING AREA	1,529
GARAGE AREA	491
LANAI AREA	110
ENTRY AREA	19
TOTAL AREA	2,149

ALL DIMENSIONS AS SHOWN ARE APPROXIMATE AND MAY VARY WITH THE ACTUAL CONSTRUCTION.

