

# DOVER V



AH



BH



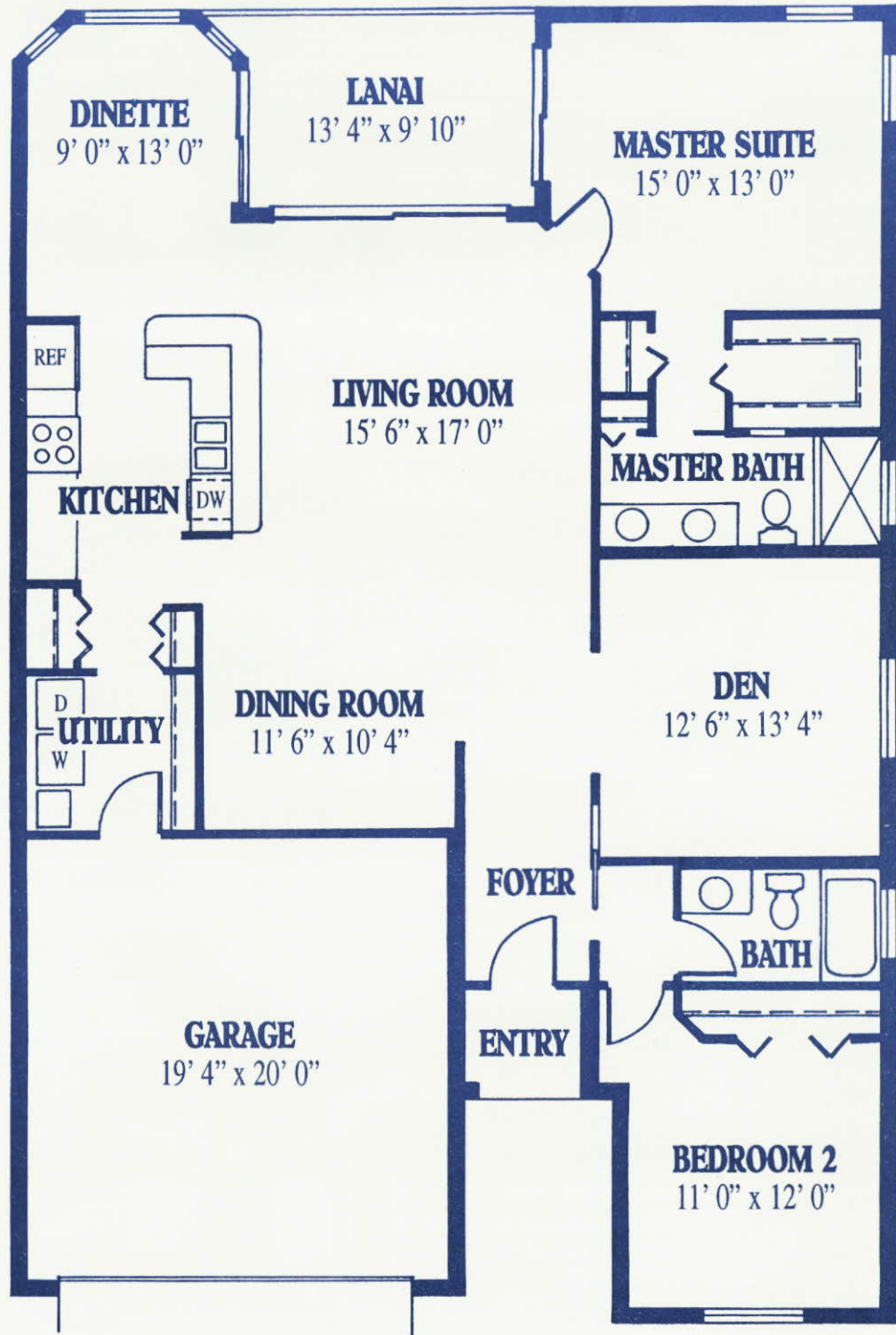
CH

2 Bedroom, 2 Bath & Den or 3 Bedroom Option

 **Rutenberg Homes**  
A DIVISION OF U.S. HOME CORPORATION



# DOVER



SQUARE FOOTAGE	
Living Area	1697
Garage	422
Entry	26
Lanai	122
<b>Total</b>	<b>2267</b>



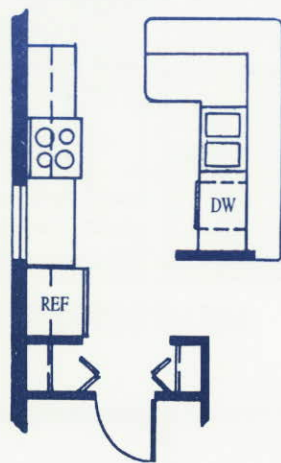
You'll find all the comforts you need in our Dover floor plan. This 2 bedroom, 2 bath home with den, or 3 bedroom option, offers an array of features, including sliding glass doors in the dinette, living room and master suite areas that lead to the under roof lanai, an additional family room option, and beautiful entertainment center option. This well thought out design is open and airy – perfect for a growing family or those that want plenty of space.

 **Rutenberg Homes**  
A DIVISION OF U.S. HOME CORPORATION

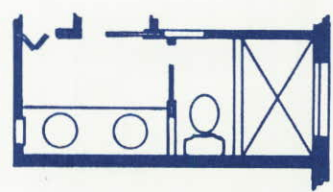
ALL DIMENSIONS ARE APPROXIMATE AND MAY VARY WITH THE ACTUAL CONSTRUCTION.



**KITCHEN LAYOUT**



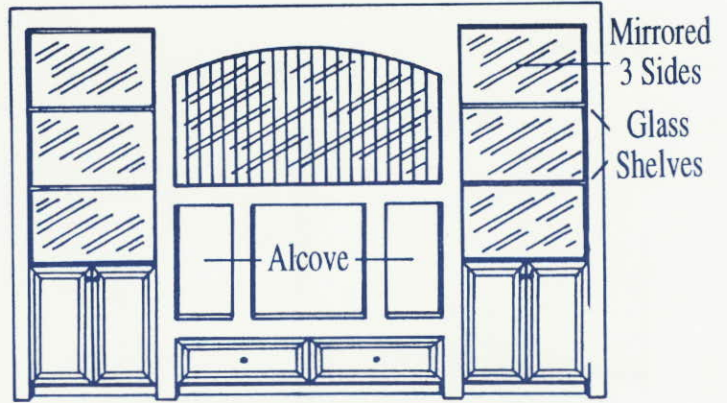
**MASTER SUITE & BATH**  
Additional Living  
Area 33' sq. ft.  
(New Den size - 12' 4" x 12' 0")



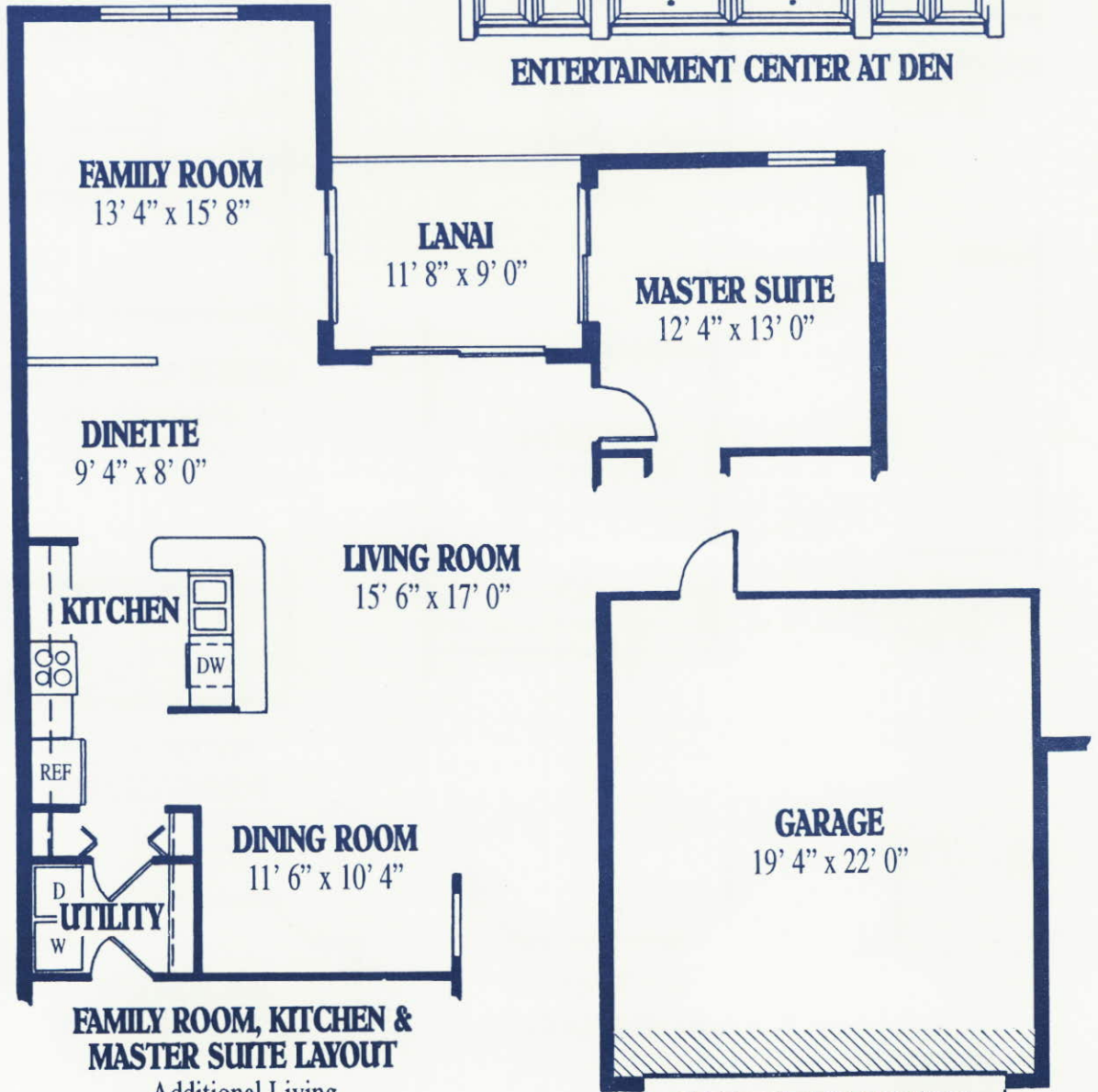
OPTIONS SHOWN ARE NOT INCLUDED IN THE BASE PRICE OF THE HOME. FOR PRICING INFORMATION, PLEASE CONSULT WITH YOUR SALESPERSON.

**POPULAR  
OPTIONS**

**BAY WINDOW  
AT FAMILY ROOM**  
Additional Living  
Area 20' sq. ft.



**ENTERTAINMENT CENTER AT DEN**



**FAMILY ROOM, KITCHEN &  
MASTER SUITE LAYOUT**

Additional Living  
Area 143' sq. ft.  
Lanai Area 105' sq. ft.

**2' EXTENDED GARAGE**

Additional Garage  
Area 41' sq. ft.



ORAL REPRESENTATIONS CANNOT BE RELIED UPON AS CORRECTLY STATING REPRESENTATIONS OF THE DEVELOPER.  
FOR CORRECT REPRESENTATIONS REFERENCE SHOULD BE MADE TO THIS BROCHURE AND TO THE DOCUMENTS.

Jan. 1998  
Lee/Collier