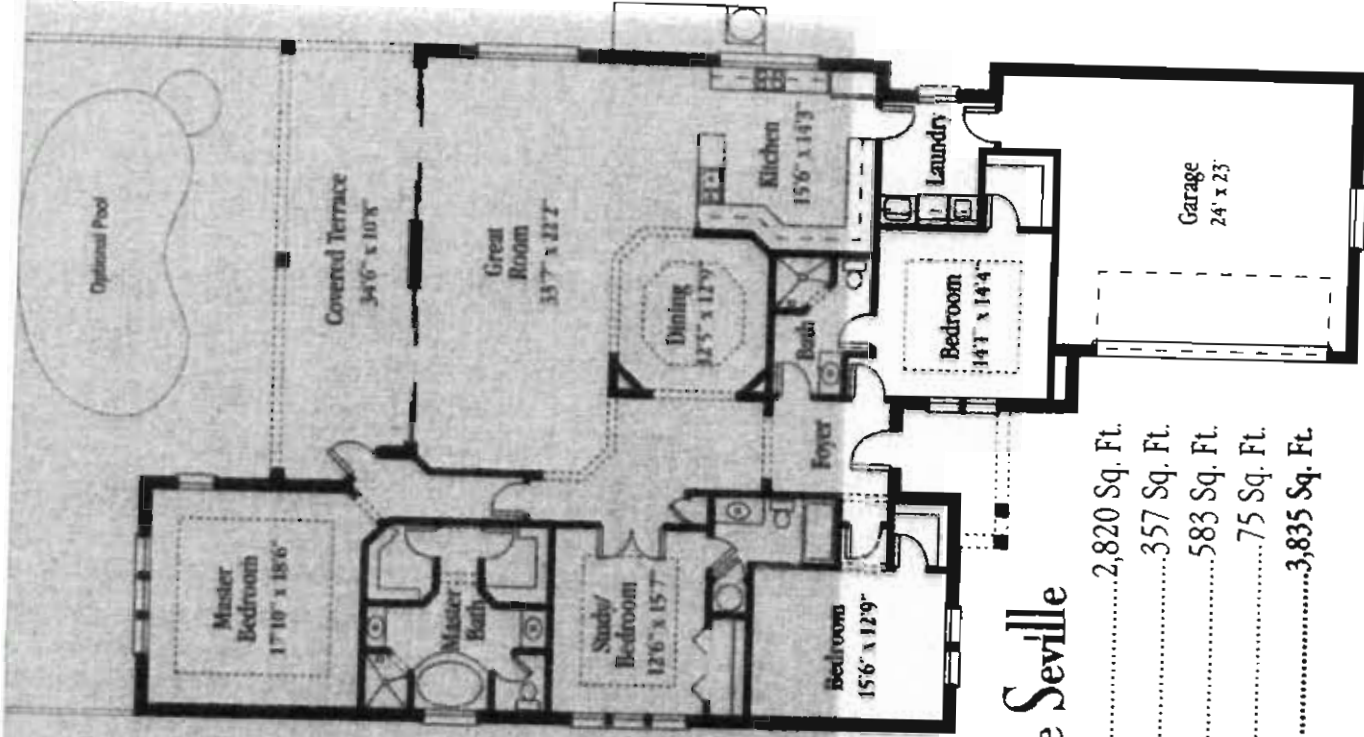




# La Bay Communities

11th holes, Santa Lucia is an intimate enclave of living and architectural excellence. Florida Bay of their homeowners. Each home is built to the design and unique features as individual as the friendship are the characteristics company president me built.



## The Seville

A/C Living Area .....	2,820 Sq. Ft.
Lanai .....	357 Sq. Ft.
Garage .....	583 Sq. Ft.
Covered Entry .....	75 Sq. Ft.
<b>Total .....</b>	<b>3,835 Sq. Ft.</b>