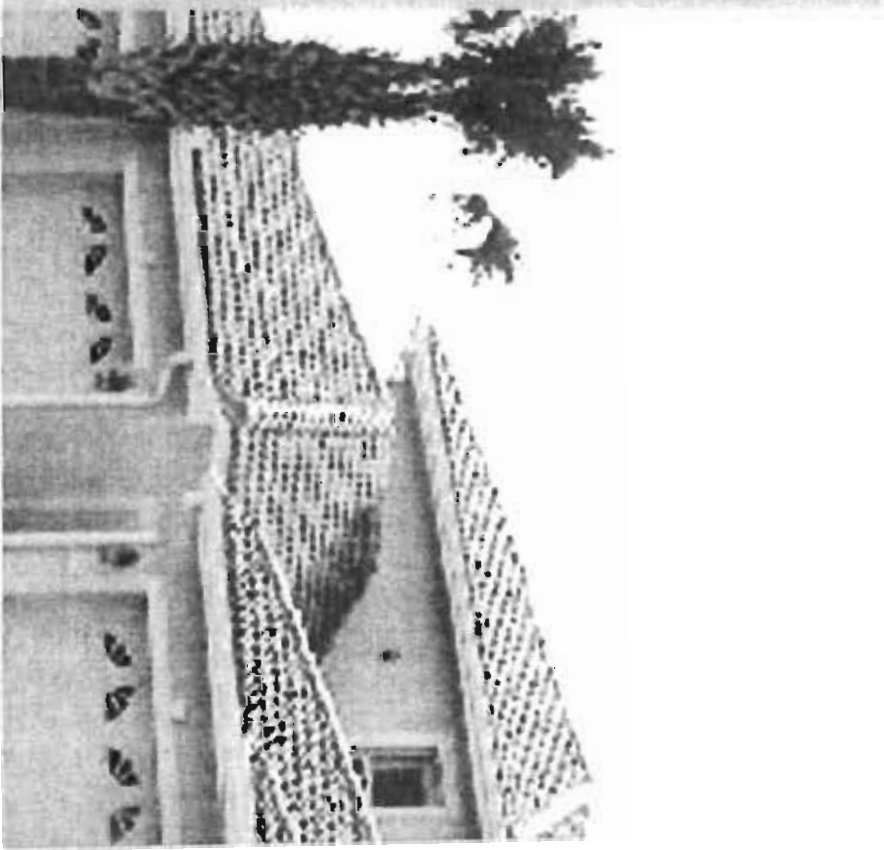
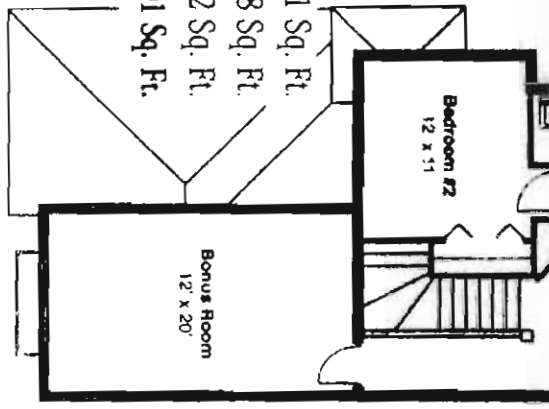


**Poinciana III
Carriage Home**

A/C Living Area.....2,021 Sq. Ft.
 Lanai 128 Sq. Ft.
 Garage..... 252 Sq. Ft.
 Total.....2,401 Sq. Ft.



Jack Parker Homes

Continues its nearly 50 years of creating innovative Sabal Palm, yet another enclave of elegant residents with garages. With a selection of eight floorplans, 1 with choices that include options in kitchen and residents have exclusive use of their clubhouse and course or shimmering lakes, in addition to state-of-